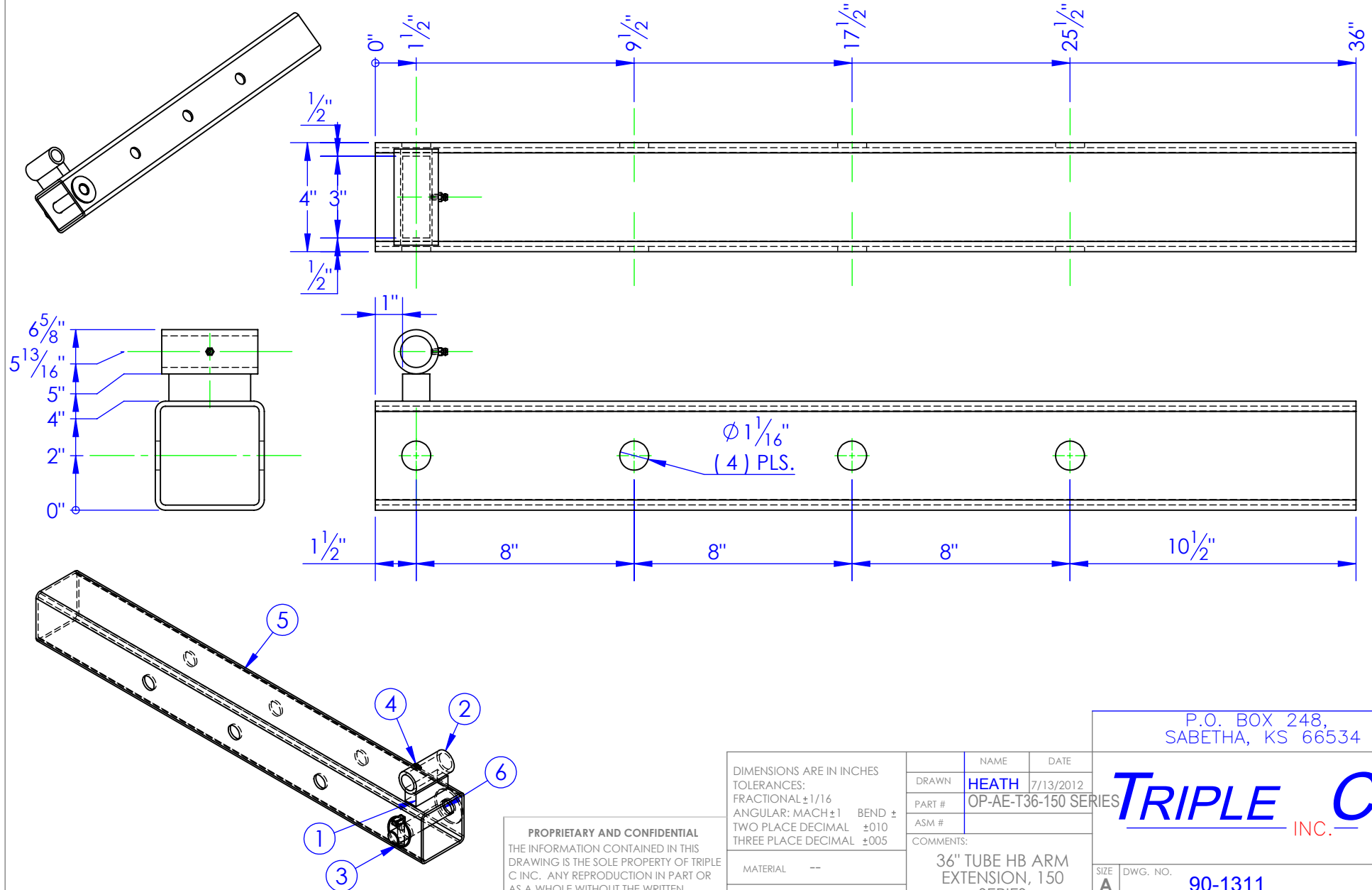


ITEM NO.	PART NUMBER	DESCRIPTION	MATERIAL	DRAWING #	QTY.
1	FI 1x1 L 3	LENGTH: 3"	FI 1x1	STOCK	1
2	FP-SB50-101	50 SPINNER BUSHING	MT 1.625x1.125	10-2500	1
3	HD-PL .4375 HD	7/16 Lynch Pin.		STOCK	1
4	HD-ZG .25-28 STR	GREASE ZERK 1/4-28 STRAIGHT	STOCK	STOCK	1
5	ST-4 x .1875 L 36	LENGTH: 36"	ST-4 x 3/16"	STOCK	1
6	RE-PN-C1x525	PIN, CON, 5-1/4"		10-1707	1

REVISIONS			
REV.	DESCRIPTION	DATE	APPROVED
A	INITIAL RELEASE	3/28/2012	



**PROPRIETARY AND CONFIDENTIAL**  
 THE INFORMATION CONTAINED IN THIS  
 DRAWING IS THE SOLE PROPERTY OF TRIPLE  
 C INC. ANY REPRODUCTION IN PART OR  
 AS A WHOLE WITHOUT THE WRITTEN  
 PERMISSION OF TRIPLE C INC. IS PROHIBITED.

DIMENSIONS ARE IN INCHES TOLERANCES: FRACTIONAL $\pm 1/16$ ANGULAR: MACH $\pm 1$ BEND $\pm$ TWO PLACE DECIMAL $\pm 0.010$ THREE PLACE DECIMAL $\pm 0.005$	
MATERIAL	---
DO NOT SCALE DRAWING	

NAME	DATE
DRAWN HEATH	7/13/2012
PART #	OP-AE-T36-150 SERIES
ASM #	
COMMENTS: 36" TUBE HB ARM EXTENSION, 150 SERIES	

P.O. BOX 248, SABETHA, KS 66534			
<b>TRIPLE C</b> INC.			
SIZE <b>A</b>	DWG. NO. <b>90-1311</b>	REV. <b>A</b>	
SCALE: 1:5	WEIGHT: 31.06	SHEET 1 OF 1	